





A Message from **John Fitzpatrick**

Cover: One of the world's last remaining Spoon-billed Sandpipers with his chick, photographed in July 2011 on the coastal tundra of the Russian Far East. Inside cover: A male Spoon-billed Sandpiper just after arriving on the breeding grounds. Above: A Spoon-billed Sandpiper nest with eggs. As part of an international expedition to conserve this critically endangered species, the Cornell Lab of Ornithology's multimedia producer, Gerrit Vyn, captured these photos and the first high-definition footage of Spoon-billed Sandpipers on their breeding grounds. The Cornell Lab is using scientific expertise, combined with powerful multimedia, to galvanize international conservation efforts.

The cover of this report captures a rare moment with a Spoon-billed Sandpiper and his chick on the arctic tundra. Spoon-billed Sandpipers are one of the most distinctive shorebirds on the planet—yet most people have never seen or heard of them. Fewer than 200 remain in the world. Their survival depends on conditions on their nesting grounds in Russia, migratory stopover routes in Kamchatka, China, and Korea, and wintering areas in Vietnam, Thailand, Myanmar, and Bangladesh.

Like Spoon-billed Sandpipers, tens of thousands of birds across the world are ambassadors for global conservation. It takes the will of nations to save them. Yet all too often, so little is known about them—and so little conveyed to the public and policy makers—that the potential for conservation goes unrealized. Recognizing the need for a sea change, the Cornell Lab of Ornithology works at all levels to increase the understanding and protection of birds and other wildlife. We advance scientific knowledge, work with partners to identify the most important steps needed to safeguard ecosystems, and empower people of all ages to learn and conserve.

Scientists, educators, and students throughout the Cornell Lab of Ornithology are doing this by reaching across the globe. This year, birders around the world entered data into eBird, lighting up the global map with new sightings every passing hour. Our autonomous recording units returned acoustic data from locations as far-flung as Gabon, Ireland, Alaska, and the Gulf of Mexico—helping us keep the pulse of endangered forest elephants, whales, and birds by monitoring their sounds. From Australia, the Arctic, and Argentina to New Guinea and Siberia, our researchers used the latest technologies, including remote video cams, DNA analyses, migration tracking devices, and supercomputing techniques to understand nature's complexity and reveal new clues about how to sustain the diversity of life.

We're collaborating with teachers, scientists, and students internationally as well—through K–12 curricula, undergraduate and graduate research projects around the world, and workshops to build conservation capacity in Latin American countries. Our websites reach more than 6 million people in 187 countries, providing bird information, sounds, and videos from our Macaulay Library, and powerful multimedia productions that shed light on pressing wildlife conservation issues.

How does this all add up? Please browse the pages of this report to find out how we work with partners to help threatened species such as Golden-winged Warblers; aid public agencies in prioritizing conservation across habitats through the State of the Birds report; advise the energy industry about how to minimize harm to wildlife; and galvanize international conservation efforts by bringing attention to the needs of Spoon-billed Sandpipers and other birds. Take a behind-the-scenes peek at a soon-to-be launched citizen-science project called YardMap, and find out how we're developing sophisticated techniques combining sound, radar, and observational data to forecast the migrations of birds.

As I look to the exciting work ahead, I am reminded that we couldn't do any of this without you and our many partners, collaborators, and supporters. Thank you for enabling us to continue building the most powerful tools for science and conservation, advancing knowledge, and amplifying conservation across the world.

Sincerely,

JOHN W. FITZPATRICK, LOUIS AGASSIZ FUERTES DIRECTOR

Citizen Science ACROSS THE WORLD



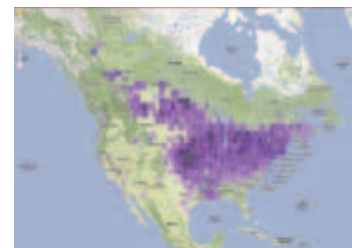
This year, citizen-science participants sent us their bird observations from **170 countries**.

This year, we celebrate 25 years of Project FeederWatch and the transformative power of citizen science. Participants now contribute citizen-science data to the Cornell Lab from nearly every country, tracking the pulse of nature through the movements and abundance of birds.

With leading-edge tools to display data in real time, we engage hundreds of thousands of people in the process of science and use advanced computing to investigate the most challenging environmental questions.

One Planet, 10,000 Bird Species

In a landmark year for eBird, participants logged more than 1.3 million observation hours in the field, bringing the worldwide total to 9,256 bird species reported. Data from 107,000 locations in the United States were the basis for the 2011 State of the Birds report, highlighting the conservation value of public lands.



Baltimore Oriole summer distribution



Winter Distribution in Costa Rica

Meanwhile, in just the first year of global data entry, eBirders are lighting up maps of bird species distributions across hemispheres through time.

“It’s amazing to witness how eBirders are transforming what it means to go birding,” said project co-leader Chris Wood. “Even more amazing is how the collective efforts of thousands of birders are transforming science and conservation.”

With worldwide reports, eBird maps now show the seasonal movements of birds across their ranges. Above, reports of Baltimore Orioles (purple dots) during the breeding season in the United States and Canada (top), and during winter in Costa Rica (bottom).



Linking Yards Into Landscapes for Birds



The Cornell Lab is beta-testing YardMap, a new online citizen-science project funded by the National Science Foundation (NSF) to help people see the impact of their actions on habitat for birds.

Participants zoom in on satellite images to construct maps of their own yard, including features such as lawns, native plants, or feeders. Scientists and participants alike can see how yards connect with one another into larger landscapes supporting birds and other wildlife. “YardMap is a collaborative project that combines the power of social networks with citizen science,” said Janis Dickinson, the Lab’s director of Citizen Science. “It will help us understand how best to use these tools to aid people in enhancing conservation practices and outcomes—at home and across the continent.”

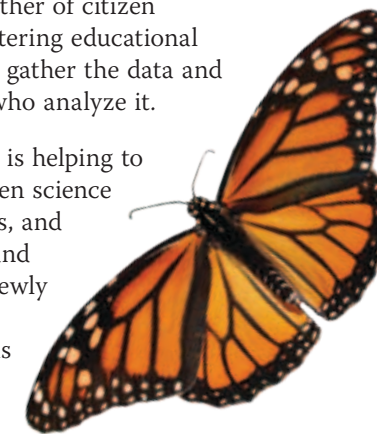


Students in Puerto Rico participate in Celebrate Urban Birds, combining bird watching, science, and the arts.

Citizen Science, Transcendent

Stars, butterflies, frogs, and fossils...citizen-science projects have proliferated into hundreds of opportunities around the world for people to connect with nature and contribute to science. The Cornell Lab’s Rick Bonney is a founding father of citizen science as it’s practiced today—fostering educational outcomes for the participants who gather the data and research results for the scientists who analyze it.

With NSF funding, Bonney’s team is helping to advance the emerging field of citizen science by establishing best practices, tools, and networks for professionals to use and build upon. Now in the works: a newly improved Citizen Science Central website for practitioners—and tools to measure the impact of public participation in science.



Project FeederWatch data show that cold temperatures in the Northeast have a greater effect on limiting the distributions of birds than lack of food. Analyses also suggest that distributions are affected by how well a species adapts to urbanization, a factor to be considered in studies of climate change.

Ambassadors FOR THE BIRDS

After eBird went global last year, we were astonished by the network of volunteers that quickly formed to get eBird off the ground in their own countries.

Tommy Pedersen from the United Arab Emirates submitted 22,516 checklists from personal and historical records. He also reviews incoming data.

The United Arab Emirates now has one of the most impressive data sets of any country, with complete charts and maps for more than 530 species.



“I am especially impressed with the ease of use and presentation of data in eBird. This is truly a new era for all birders,

as well as an amazing database for scientists and amateurs alike.”

— Tommy Pedersen, Dubai, United Arab Emirates

Research ACROSS THE WORLD

Cornell Lab researchers study wildlife in **28 countries** from all **7 continents**.

Voiceprints FROM THE SKY

Science is at the heart of the Cornell Lab of Ornithology. From curiosity to discovery to insight, scientific study deepens our appreciation of nature and reveals the actions needed to protect our planet and the diversity of life.

What's behind the intriguing behaviors of birds and their diversity?

Scientists at the Cornell Lab use DNA analyses, video techniques, tracking devices, and ingenuity to reveal more than the eye can see.



ALL IN THE FAMILY

Why do Acorn Woodpeckers help raise young that aren't their own? A new study found it's not because they gain parenting skills or benefits from an extended stay with family. By helping to raise relatives, they perpetuate the family genes.

A HISTORY OF WARBLERS

Scientists at the Cornell Lab have generated the first complete evolutionary tree for the wood-warblers. The results have spurred extensive changes to the classification and provided new insights on questions such as why there are so many warbler species, and how some species became migratory.

SWALLOWS OF THE AMERICAS

Scientists across the hemisphere collaborate on studies of nine species of swallows in Golondrinas de las Americas, a project funded by NSF.



How do human activities affect birds and other wildlife?

Researchers at the Cornell Lab study how environmental stressors such as pollution, energy development, and other activities affect wildlife and ecosystem health.



ALTERED SONG

PCBs are chemicals known to cause neurological damage and mimic hormones. Graduate student Sara DeLeon has found preliminary results suggesting

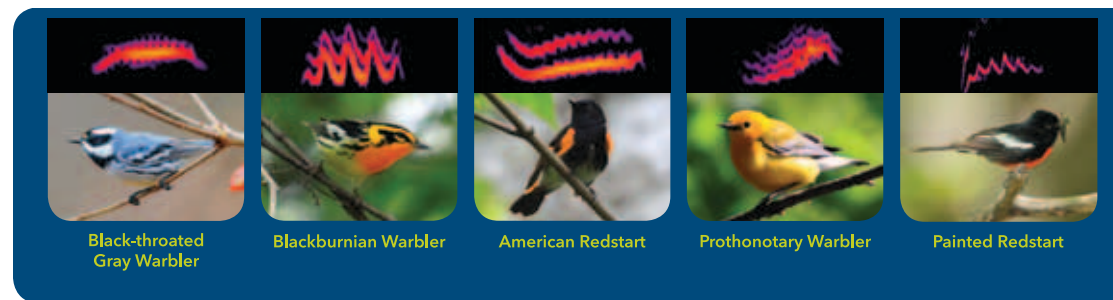
that PCBs have affected birds' ability to sing along a contaminated area of New York's Hudson River.

A TOUGH NUT TO CRACK

Graduate student Taza Schaming uses radio tracking to follow Clark's Nutcrackers in the Greater Yellowstone Ecosystem. She is documenting how nutcrackers are affected by declines in whitebark pines. Her goal: to identify management actions that will improve habitats.



Photos left to right, top to bottom: Magnificent Riflebird. Ed Scholes and team in New Guinea. Acorn Woodpeckers. Song Sparrow. Tree Swallow. Clark's Nutcracker. Taza Schaming with radio-tracking equipment. Wood Thrush.



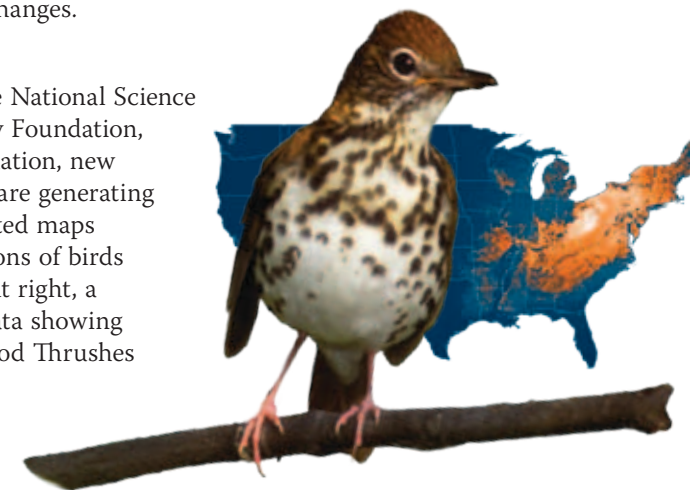
Spectrograms of nocturnal flight calls for five warbler species.

How can we reveal a new understanding of birds across landscapes?

Ornithologists are combining forces with statisticians and computer scientists, using high-performance computing techniques to understand large-scale patterns in nature. The results can help show how bird populations respond to land use, climate, and other environmental changes.

MAPS IN MOTION

With support from the National Science Foundation, Leon Levy Foundation, and Wolf Creek Foundation, new analyses of eBird data are generating unprecedented, animated maps showing the distributions of birds throughout the year. At right, a map based on eBird data showing the distribution of Wood Thrushes in summer.



THE "WEATHER CHANNEL" FOR BIRDS

On a given night, can we predict what birds will migrate, and when and where they'll go? The Cornell Lab and Oregon State University have received a \$2.2 million NSF grant to develop a system that will forecast bird migration in the United States. It will use weather data, radar, observations from eBird, and the nocturnal flight calls of birds to generate real-time estimates of migration.

Around the world, autonomous recording units from the Cornell Lab are listening for wildlife. With hundreds of thousands of hours of recordings, a major challenge is processing the data to quickly find and quantify the sounds of each species.

Now a two-year, \$1.25 million gift from the Kenneth L. Harder Trust will kick-start development of a new system that "trains" computers to look for the "voiceprints" of particular species, such as nocturnally migrating Wood Thrushes and Veeries.

This generous gift was made possible by the Harder family: Scott Harder (trustee), Karen (Tillman) Harder ('81), Liv ('11), and Donald. Kenneth Harder, Scott's uncle, was a lifelong birder.

"This acoustic monitoring project is essential to document human impacts on migratory bird and other animal populations," says Scott Harder.

"It's one of the most significant and exciting research gifts in the Lab's history," says Sean Scanlon, the Lab's senior director of Development and Philanthropy. "It's enabling the Lab to do what we do best: listen to the world and use what we learn to advance conservation."



Conservation ACROSS THE WORLD

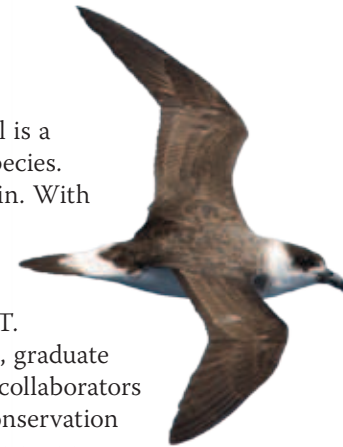
We conduct conservation research and monitoring in **19 countries** around the world.

The Cornell Lab provides the best available scientific data to help government agencies, industries, and conservation organizations make decisions for wildlife protection.

Understand

A RARE FIND

The Black-capped Petrel is a critically endangered species. Fewer than 2,000 remain. With support from the U.S. Fish and Wildlife Service and the John D. and Catherine T. MacArthur Foundation, graduate student Jim Goetz and collaborators are gathering crucial conservation data on Hispaniola. This summer, for the first time, they observed and monitored the growth of a chick at the nest.



SOUND CONSERVATION

As demand rises for oil, gas, and wind energy, the Cornell Lab helps government agencies and industries identify where wildlife is at risk from noise pollution, habitat alteration, and direct mortality. The Lab's Bioacoustics Research Program develops acoustic technologies to monitor and protect whales around the world.



The Helmeted Woodpecker is one of the rarest and least known woodpeckers in the world. Cornell Lab scientist Martjan Lammertink moved to Argentina this year to help identify habitat restoration measures in logged forests.

A TALE OF TWO SPECIES

DNA analysis by undergraduate Nicholas Sly and collaborators confirmed that the Gray-crowned Palm-Tanager (top image at right) is Haiti's only endemic bird species, distinct from the more widespread Black-crowned Palm-Tanager (lower image at right). The finding underscores the need to protect reserves in a country where less than 2% of native forest remains.



ON THE BRINK

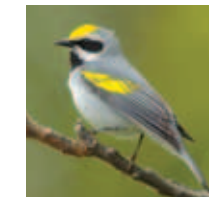
Graduate student Yula Kapetanakov searches for Slender-billed and White-rumped vultures in Cambodia. Once numbering in the millions, these species declined to near extinction after the drug diclofenac was used for livestock, poisoning vultures feeding on carrion. Yula is using DNA analyses to estimate population sizes for conservation efforts.



Protect

A FUTURE FOR GOLDEN-WINGS

Cornell Lab scientists and partners will soon release the first rangewide conservation plan for rapidly declining Golden-winged Warblers. The plan was made possible with help from citizen-science participants and support from the National Fish & Wildlife Foundation and U.S. Fish & Wildlife Service.

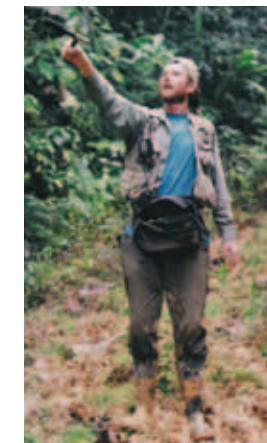


THIS LAND IS OUR LAND

The 2011 State of the Birds report revealed distributions of hundreds of bird species on public lands, illuminating ways that agencies can manage habitats for birds on 650 million acres of land. The analyses by Cornell Lab researchers were made possible in part by NSF, the Leon Levy Foundation, and the Wolf Creek Foundation.

BEYOND OUR BORDERS

We increase international conservation capacity by sharing tools and expertise in other countries. With support from the John D. and Catherine T. MacArthur Foundation and other supporters, the Cornell Lab conducts workshops in Argentina, Cuba, Dominican Republic, Haiti, Guatemala, and Mexico to advance the study and protection of birds.



The Lab's Macaulay Library provides unparalleled sound and video recordings from around the world, used in conservation research, monitoring, and education. More than 175,000 audio and 50,000 video recordings are accessible for free online.

Conservation LEADERSHIP

Thanks to a generous gift from Robert Schumann, the Cornell Lab has opened a long-desired position for a faculty-level director of Conservation Science. This generous gift, matched by Cornell University, is a transformative step in expanding the Lab's leadership and conservation impact.

"Bob's passion for birds is unfailing," said Scott Sutcliffe, the Lab's stewardship director. "This new faculty position follows Bob's many years of support for the Lab's conservation initiatives and expresses his love for birds and trust in the Lab's staff and faculty."

A search for the Robert F. Schumann Faculty Fellow is now underway.



The Elephant Listening Project collects and analyzes acoustic data on endangered forest elephants in Africa. Above, our collaborators in Gabon prepare equipment to monitor elephants threatened by illegal hunting.

Education ACROSS THE WORLD

Our educational programs reach people in **70 countries.**



The Athena Fund: PURSUING ANSWERS TO NATURE'S MYSTERIES

Established by an anonymous donor in 2010, the Athena Fund helps graduate students investigate nature's mysteries around the world. Thanks to the Athena Fund, seven students pursued research in five countries last year, and additional students will be supported this year.

In the tropical mountains of Papua New Guinea, Ben Freeman is investigating why bird species tend to occupy narrow zones—sometimes limited to a 2,000-foot elevational range. This year, Ben joined a team surveying a mountain range on the Huon Peninsula and found six bird species previously unknown there.



"The Athena Fund has helped me conduct field work with promising early results, and helped me learn a new language, Tok Pisin," Ben said. "It's allowed me to spread the idea of a conservation ethic to people with limited contact with the outside world, and to explore one of the earth's most biologically interesting yet largely unknown regions."

At the Cornell Lab, the world is a classroom where everyone can be a student of nature. Our educational programs reach people in 70 countries—children, teenagers, university students, professionals, and people who simply love birds. It's our commitment and our passion to make the best resources, technology, and training available to all. Our goal: to increase the world's joy, understanding, and conservation of nature.

For K-12 Students

Funded in part by the National Science Foundation, the Cornell Lab's educational programs help kids transform curiosity into science and discovery.

Students explore birds and science with the **BirdSleuth** curriculum. Customized versions of BirdSleuth are migrating to Mexico, Guatemala, Costa Rica, and the Caribbean, thanks to federal grants and gifts from Lab donors.

Delving into the Cornell Lab's new **Sea of Sound** curriculum, middle- and high-school students hear an underwater world alive with the sounds of blue whales, snapping shrimp, and drum fish. Using sound and video from around the world, they investigate how animals produce sound and debate the effects of noise pollution. The bilingual **Celebrate Urban Birds** program connects people of all ages with birds and conservation through citizen science, the arts, and habitat improvement. Recently, partners have launched similar programs in Cuba, Guatemala, Colombia, Chile, and Uruguay.



With the **Crossing Boundaries** curriculum, middle- and high-school students use GPS, GIS, and Google Earth to site a new biodiversity preserve in the Brazilian Amazon, investigate wildlife and cattle management in Kenya, and compare bird populations between the United States and Mexico. Crossing Boundaries is a joint project of the Cornell Lab and Hobart and William Smith Colleges.

For Aspiring Biologists

At the Johnson Center for Birds and Biodiversity, students are in every part of the building—learning from scientists, extracting DNA, measuring specimens, analyzing sounds, sharing the latest data they've brought back from oceans, fields, and forests. Each year, new students arrive with fresh questions and ideas, and new graduates move on to discover, to teach, and to inspire others.

Cornell Lab scientists mentor more than 100 **undergraduate and graduate students** each year. Beyond Cornell, the Lab's **Online Research in Biology** project offers lesson plans to help faculty engage students in research using citizen-science databases.



For Professionals

We put the latest tools and techniques into the hands of educators, researchers, and conservationists through workshops for professionals. Scientists from around the world learn sophisticated sound-recording and analysis techniques to aid their studies and conservation efforts. Educators attend free BirdSleuth workshops about connecting kids through migratory birds.



For Lifelong Learners

Since 1972, bird enthusiasts from around the world have taken the **Home Study Course in Bird Biology** and our recent online course, **Courtship and Rivalry in Birds**.

Home Study Course scholarships from Lab donors have been awarded to 32 students in 15 countries from Bangladesh to Honduras, opening opportunities for bird study that might not otherwise be possible. Many go on to share what they learn in their home countries,

creating a powerful ripple effect of expanding knowledge and conservation.

A Community for Birds

All About Birds

"Thank you for making this superb collection of bird research so readily available to bird lovers everywhere. My appreciation and sense of wonder have been heightened, and All About Birds is sure to become a major distraction—albeit a delightful one—for me in days to come!"

—Sheri Hartstein



www.AllAboutBirds.org

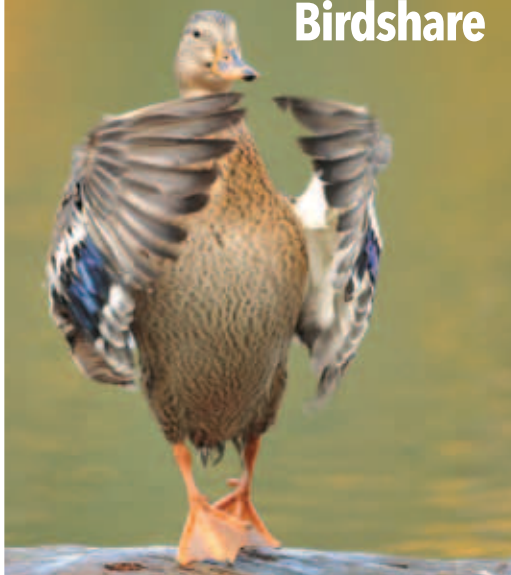
"eBird

totally, totally rocks, and I'm doing citizen science, yay me! I mean, yay you guys."

—Luisa Serrano, eBirder

www.ebird.org

BRAVO! 79,168 photos contributed to Birdshare



www.flickr.com/groups/birdshare

"Wow!

I just finished my 23rd FeederWatch season! I still enjoy participating as much as I did when I first started. Thanks for continuing to provide this wonderful excuse to spend a lot of time watching the birds in my yard. And all in the name of science!"

—Victoria Runnoe, FeederWatcher

www.feederwatch.org

NestWatch



Participants monitored 84 species this year. The count? 21,000 eggs & 14,000 fledglings

www.NestWatch.org

"I feel very lucky that I have reached a place in my life where I am able to follow my passion, where I can make important contributions to conservation and ecology, and can learn so much every day, while having the opportunity to teach others."

—Taza Schaming, Cornell graduate student



Great Backyard Bird Count

4 Days / 92,218 Checklists



www.BirdCount.org

BARTELS Science Illustration Program



"This internship is the most valuable experience I have ever had as a natural history artist."

—Fritzi Wirth, Intern, Bartels Science Illustration Program



52,191 Facebook Fans

"I always enjoyed birding but now I love it. I have learned so much. I look forward to the posts every day."

—HEIDI EBEL, FACEBOOK FAN

www.facebook.com/cornellbirds



Neotropical Birds Thanks to Our 325 Contributors

www.Neotropical.birds.cornell.edu

Ted Parker's 10,762 historic recordings now online.

www.MacaulayLibrary.org

Citizen Science

"The citizen-science activity was pretty cool because we saw how even in the same garden some plants attracted a lot of birds and some didn't. The installation of the bird garden was a lot of hard work but it was cool how we were planting stuff that would attract birds."

—Owen Kay, age 15, Celebrate Urban Birds

www.CelebrateUrbanBirds.org



An Estate Gift Can Provide for You, Your Family, and the Lab



Recently, I had the pleasure of spending a day at the Johnson Center here in Sapsucker Woods with a member who has been with the Cornell Lab of Ornithology for 50 years. This gentleman from Texas has loved birds all of his life and signed up for the very first issue of *The Living Bird* annual in 1962. We traded stories with Greg Budney in the Macaulay Library, Ken Rosenberg in Conservation Science, Tim Gallagher, editor-in-chief of *Living Bird*, and John Fitzpatrick, director of the Lab.

In that short afternoon, I learned an amazing amount about the Lab's history and meaning—and ended up thanking the visitor not only for his amazingly generous five decades of support but for sharing his knowledge and passion as well.

It was a powerful reminder of why and how the Cornell Lab works. Although we are a proud research unit of the College of Agriculture and Life Sciences at Cornell University, we are self-funded, driven by more than 40,000 wonderfully philanthropic donors from across the country who believe in our mission.

Whether you have been with the Lab for 50 years, weeks, or days, I would like you to take a moment to consider including the Cornell Lab in your estate plans. Fundamentally, this is an important statement of your values. Like everyone who works here, and the 40,000 other people who financially support the Lab, we hope you believe that science, conservation, and engagement of legions of students and citizen-science participants will provide hope for the future of birds and biodiversity.

Including the Lab in your will is very easy (see example on page 15). In addition, because we are part of Cornell University, we have some of the best planned giving and estate professionals on staff who would be happy to help advise about gifts of real estate, lead trusts, gift annuities that pay you, and many more options.

Most of all, thank you. As I was reminded by my visitor from Texas, the Lab was created by the passion, gifts, and commitment of hundreds of thousands of people who believe in the common mission we have to save birds and biodiversity on this planet. I hope you will consider making a statement about that commitment in your estate plans too.

Sincerely,

Sean Scanlon
Senior Director, Development and Philanthropy
(607) 254-1105; sbs259@cornell.edu

Photos left to right, top to bottom: Yellow-bellied Sapsucker. Cornell undergraduate Lena Samsonenko in Morgens Observatory, Johnson Center for Birds and Biodiversity. The Lab's magazines, 2011 and 1962. Tree Swallow. Linda Kramer. Parabolic recording equipment, ca. 1935. Audio curator Greg Budney with handheld parabola. The Johnson Center for Birds and Biodiversity.



Estate Planning: A Lasting Legacy

It's easy to include the Cornell Lab in your estate plans, especially through a bequest or life income agreement. To make a bequest through your will, simply include the language: "I give and bequeath the sum of \$_____ (or _____% of my residuary estate) to Cornell University, an educational institution in Ithaca, NY, for the Lab of Ornithology to be used in support of its charitable purposes." Doing so can perpetuate your interest in birds and support of the Lab forever.

To learn more about estate planning opportunities that benefit you and the Lab, please call Scott Sutcliffe at (607) 254-2424 or Sean Scanlon at (607) 254-1105. The Lab is pleased to acknowledge such friends in perpetuity as members of the Sapsucker Woods Society.



A Gift that Lives On

A generous bequest from Linda Kramer, a longtime member and dear friend, who passed away recently, will enable the Cornell Lab of Ornithology to create five new graduate student fellowships. Linda made this bequest because of her abiding love for birds, her appreciation for the Cornell Lab, and her commitment



to nurturing the aspirations of ornithology students. Linda and her husband, Samuel, set the stage for this magnificent gift through their annual giving to the Lab, providing significant annual support for students. We are saddened by Linda's death, but her legacy will live on through The Samuel and Linda Kramer Graduate Student Fellowships. Worthy students now and into the future will benefit from Linda's love of birds and commitment to education.

Administrative Board, Program Directors, and Cornell Faculty

Administrative Board

Edward W. Rose
(Chairman); President and Owner, Cardinal Investment Company

Andrew H. Bass*
Ph.D., (ex officio); Professor, Neurobiology and Behavior, Associate Vice Provost for Research, Cornell University

Robert B. Berry
Retired CEO, U.S. Liability Insurance Companies

James R. Carpenter
President and CEO, Wild Birds Unlimited

Scott V. Edwards
Ph.D., Professor, Organismic and Evolutionary Biology, Harvard University

Alexander "Hap" Ellis III
General Partner, Rockport Capital

William T. Ellison
Ph.D., CEO and Chief Scientist, Marine Acoustics, Inc.

Russell B. Faucett
General Partner, Barrington Partners

John H. Foote
Co-Founder, TransCore (Cornell '74)

Alan J. Friedman
Ph.D., Consultant in museum development and science communication

H. Laurance Fuller
Retired Co-Chairman, BP Amoco, I.C. (Cornell '61)

Ronald R. Hoy*
Ph.D., (ex officio); Professor, Neurobiology and Behavior, Cornell University

Imogene P. Johnson
Civic Leader, Conservationist, S. C. Johnson Company (Cornell '52)

Eric J. Jolly
Ph.D., President, Science Museum of Minnesota

Austin H. Kiplinger
Chairman, Kiplinger Washington Editors (Cornell '39)

Kathryn M. Kiplinger
Co-Head, U.S. Corporate Banking, Scotia Capital (The Bank of Nova Scotia) (Cornell '77)

David S. Litman
CEO, Consumer Club, Inc. (Cornell BA '79, JD '82)

Linda R. Macaulay
Cornell Lab of Ornithology Research Associate, Birdsong Recordist

Claudia Madrazo de Hernández
Founder and Director, La Vaca Independiente

William K. Michener
Ph.D., Professor and Director of e-Science Initiatives, University of New Mexico

Edwin H. Morgens
Founder and Chairman, Morgens, Waterfall, Vintiadis, & Co. Inc. (Cornell '63)

H. Charles Price
Chairman, H.C. Price Company

Elizabeth T. Rawlings
Writer and Translator, Civic Leader

Maria Schneider
Jazz Composer

Julia M. Schnuck
Conservationist, Civic Leader (Cornell '70)

Robert F. Schumann
Trustee and Chairman, Schumann Center for Media and Democracy

Jennifer P. Speers
Conservationist, Philanthropist

David W. Winkler*
Ph.D., (ex officio), Professor, Ecology and Evolutionary Biology, Cornell University

* Cornell University Faculty

Program Directors and Faculty

John Fitzpatrick*
Ph.D., Louis Agassiz Fuertes Director and Professor of Ecology and Evolutionary Biology

Rick Bonney
Director, Program Development and Evaluation

John Bowman
Director, Multimedia Productions

Adriane Callinan
Senior Director, Administration and Business Operations

Miyoko Chu
Ph.D., Senior Director, Communications

Christopher Clark*
Ph.D., Imogene Powers Johnson Director, Bioacoustics Research Program, and Senior Scientist, Neurobiology and Behavior

André Dhondt*
Ph.D., Director, Bird Population Studies, and Edwin H. Morgens Professor of Ornithology, Ecology and Evolutionary Biology

Janis Dickinson*
Ph.D., Arthur A. Allen Director of Citizen Science and Associate Professor, Natural Resources

Mary Guthrie
Director, Marketing

Steve Kelling
Director, Information Science

Walter Koenig*
Ph.D., Senior Scientist, Bird Population Studies and Neurobiology and Behavior

Irby Lovette*
Ph.D., Director, Fuller Evolutionary Biology Program and Associate Professor, Ecology and Evolutionary Biology

Ken Rosenberg
Ph.D., Director, Conservation Science

Sean Scanlon
Senior Director, Development and Philanthropy

Scott Sutcliffe
Director of Annual Fund and Stewardship

Nancy Trautmann
Ph.D., Director, Education

Michael Webster*
Ph.D., Director, Macaulay Library and Robert G. Engel Professor of Ornithology, Neurobiology and Behavior

* Cornell University Faculty

Donors

\$100,000 and up

Mr. and Mrs. Robert B. Berry Scott and Karen Harder, Kenneth L. Harder Trust
Mrs. Wendy Paulson
H. Charles and Jessie Price
Mr. and Mrs. Edward W. Rose III
Ms. Pamela J. Story
Wolf Creek Charitable Foundation

\$25,000 to \$99,999

Anonymous
Mr. and Mrs. Philip H. Bartels
Dr. Joan Brechley-Jackson
Cedar Elm Fund of Dallas Foundation
Mr. and Mrs. Russell Faucett
Mr. and Mrs. H. Laurance Fuller
Dr. and Mrs. Thomas Richard Halberstadt
Mrs. Imogene P. Johnson
Leon Levy Foundation
Claudia Madrazo de Hernández
Ms. Mary Ann Mahoney
Mrs. Julia M. Schnuck
Mr. and Mrs. Robert F. Schumann
The Ivy Fellowship
Mrs. Jennifer P. Speers
Mr. and Mrs. Edward Stuart
Joseph and Felicia Weber

\$5,000 to \$9,999

Mr. John Alexander and Mrs. Emily Fisher
Mr. John E. Alexander
Ms. Margaret R. Barton
Beim Foundation
Mrs. Mary L. Carlsen
Mr. and Mrs. Judson M. Dayton
Mr. and Mrs. V. Richard Eales
Ms. Norma Edsall
Mr. and Mrs. Walter Elcock
Mr. Andrew Farnsworth and Ms. Patricia Ryan
Mr. and Mrs. Clifton C. Garvin, Jr.
Ms. Adelaide P. Gomer
Ms. Jean B. Harries
Mr. and Mrs. Elliott D. Hillback
Mrs. Moira H. Hints
Mr. and Mrs. David Junkin
Kaytee Products, Inc.
Mrs. Jeanie Kilgour
Mr. Austin H. Kiplinger
Samuel and Linda Kramer
Dr. William T. Leeburg
Mr. and Mrs. W. Wallace McDowell
Mr. and Mrs. Davis U. Merwin
Mr. and Mrs. James H. Morgens
Mr. and Mrs. Thomas Nissley
Mrs. Helen M. Posey
Gary and Ruthie Rollins
Mrs. Elizabeth E. Rowley and Mr. Jean Rowley

\$10,000 to \$24,999

Dr. Steve Adelson and Mrs. Ellen G. Adelson
Anonymous (2)
Mr. Rex J. Bates
C. H. Stuart Foundation
Mr. Ronald L. Clendenen
Elisabeth C. Dudley
Mrs. Louisa Duemling
Mr. and Mrs. Alexander Ellis III
Mrs. Jane V. Engel
James and Catherine Gero
George and Deirdre Globler
Mr. Christopher J. K. Goodwin
Mr. John Foote and Ms. Kristen Rupert
Ms. Mary P. Hines
Ms. Tracy E. Holmes

Mr. Andrew Sabin
Mrs. B. J. Shortridge
Mrs. Carol U. Sisler
Mr. Bailey Smith
Marybeth Sollins
Dr. and Mrs. Kenneth T. Steadman
Edward and Virginia Taylor
Tompkins Charitable Gift Fund
Lewis and Margaret Topper
Mrs. Mary Clare Ward
Ms. Shelby White
Wildlife Conservation Society
Mr. L. Christopher Wright

\$1,000 to \$4,999

David Adkison
Ann and Philip Aines
Mr. Ferris Akel III
Ms. Paulette Allemand
Mrs. Debra D. Anderson
Anonymous (5)
Ms. Susan Avery and Mr. Joseph Holmes
Ms. Janet Baker
Ms. Alice-Ann Bandoni
Mr. John M. Beard, Jr.
Birds In The Hand, LLC
Mrs. Esther S. Bondareff
Mr. Stanley Bowden
Mr. and Mrs. William B. Boyd
Mr. Philip A. Bradley
Ms. Cori A. Brown
Ms. Magalen O. Bryant
Kenneth and Karen Buchi
Ms. Amanda Burden
Mrs. Susan Burkhardt
Mr. and Mrs. William D. Burrows
Ms. Ellen P. Cabot
Dr. Tom Cade
Dudley and Curtis Carlson
Ms. Carolyn Carney
Dr. David Carpenter
Mrs. Dorothy Carpenter
Mr. James R. Carpenter
Elliot and Karin Catterulla
Mr. Donald F. Chandler
Mr. Henry T. Chandler
Mr. Andrew Chen and Ms. Heidi Mass

Dr. J. A. Clayman
Terry and Zeo Coddington
Alan and Elisabeth Cody
Mr. Davy Colby
Mr. and Mrs. Samuel Coleman
Conservation Trust of Puerto Rico
Robert and Vanne Cowie
Ms. Agnes D. Cralley
Mr. Severyn S. Dana
Mrs. Lois N. Davie
Mr. Vernon D. Dayhoff
Mrs. Wallace C. Dayton
Mr. Ron Demer
Ms. Clover M. Drinkwater
Lauren Dudley
Mr. Michael Dumont
Ms. Nancy P. Durr
Mrs. Elizabeth Edgell
Major Theodore H. Eiben
Dr. Bruce A. Eissner and Mrs. Judith P. Eissner
El Deseo Foundation
Dr. Donna Esposito and Dr. William Ross
Professor and Mrs. Howard E. Evans
John and Molly Fitzpatrick
Gale and Stanley Flagg
Mr. Samuel C. Fleming
Fletcher Bay Foundation
Ms. Natalia G. Garcia
Ms. Barbara M. Garlinghouse
Mr. Floyd H. Gilles
Mr. Robert Glass and Ms. Bronwen Nishikawa
Mr. and Mrs. Robert G. Goelet
Ms. Annette L. Gosnell
Mrs. Bernice Graham
Ms. Wendy Graham
Mr. and Mrs. Bradley Grainger
Mr. William F. Gratz '53
Ms. Joan M. Guerin
Mr. and Mrs. James C. Hanchett
Dr. J. Douglas Hanna
Dr. and Mrs. Francis Harris
Mrs. Margaretta S. Hausman
Helmut and Candis Stern Animal and Bird Welfare Fund
Mr. Thomas A. Hendrickson
Dr. Susan Henry and Mr. Peter Henry

Mrs. Sherley A. Higuera
Ms. Kate S. Hollos
Dr. and Mrs. Robert Horn, Jr.
Thomas and Karen Horn
Ms. Gale S. Hurd
Inventory Solutions, Inc.
Mrs. Pat Jacobs
Ms. Kathryn Jacobus
Jack and Phyllis Kalivoda
Ms. Belinda A. Keever
Mr. Ronald J. Kemperle
Mr. Brendan C. Kinane
Mr. and Mrs. Hugh E. Kingery
Mr. Thomas S. Knight, Jr.
Ms. Victoria F. Korth
Dr. Donald E. Kroodmsa
Jeffrey and Elizabeth Kurtz
Donald and Deborah Lauper
Mr. and Mrs. Randolph S. Little
Liz Claiborne and Art Ortenberg Foundation
Philip and Caroline Loughlin
Dr. and Mrs. Herbert Louis
Mr. C. James Luther
Mr. and Mrs. David B. Magee
Ms. Carolyn Mangeng and Mr. Walter Spall
Mr. Evan Marks
Dr. Richard Marshak and Dr. Andrea Landsberg
Mr. Michael Matuson
Ms. Victoria May
Dr. Leigh McBride and Dr. Richard McCormack
Thomas and Linda McCarthy
Ms. Mary Ellen McCrossen
Ms. Winifred P. McDowell
Ms. Marjorie McGranahan
Mr. and Mrs. Peter C. Meinig
Ms. Madeline Miles
Stephen and Evalyn Milman
Mr. John V. Moore
William and Mary Sue Morrill
Mrs. Marcia S. Morton
Ms. Susan L. Mowry
Dr. Robert L. Murry, D.V.M.
Ellen and Rachel Naegeli
Dr. Diana Nevins
Owls Roost Fund

Mrs. Ellen S. Parkes
Ms. Susan M. Patton
David and Cary Paynter
Mr. James Pea
Pine Tree Farms, Inc.
Dr. Stefania Pittaluga and Mr. James Branegan
Poplar Cruises
Jack and Michael Pratt
Mr. Robert T. Priddy
Mrs. Sally Quinn
Dr. and Mrs. Hunter Rawlings
Mr. Steven A. Reisinger
Ms. Judith S. Renshaw
Ms. Frances M. Rew
Dr. Deborah A. Reynolds
Dr. and Mrs. Frank H. T. Rhodes
Judy and Stuart Richardson
Mrs. Dorothy W. Rinaldo
Dr. Dean R. Rising
Robert J. Laskowski Foundation
Ms. Rhonda Rochambeau
Rocky River Capital Partners
Mr. Larry Roel
Dr. William L. Rutherford
Mr. Gary Rydstrom
Sage Geodetic, LLC
Mr. Carolyn W. Sampson
Ms. Sara Saplin
Ms. Maria Leonor Sardinha
Mr. Herman R. Schenkel, Jr.
Peter and Christine Schluter
Patricia and Richard Schramm
Ms. Paula M. Schutte
Mr. Barry K. Schwartz
Mrs. Margaret F. Scott
Mr. Leroy W. Sinclair
Ms. Mary Ann Siri
Mrs. Susan L. Sloan
Miss Pamela M. Smith
Ms. Susan Sollins
Stephen and Evalyn Milman
Mr. John V. Moore
William and Mary Sue Morrill
Mrs. Marcia S. Morton
Ms. Susan L. Mowry
Dr. Robert L. Murry, D.V.M.
Ellen and Rachel Naegeli
Dr. Diana Nevins
Owls Roost Fund

Mrs. Sherley A. Higuera
Ms. Kate S. Hollos
Dr. and Mrs. Robert Horn, Jr.
Thomas and Karen Horn
Ms. Gale S. Hurd
Inventory Solutions, Inc.
Mrs. Pat Jacobs
Ms. Kathryn Jacobus
Jack and Phyllis Kalivoda
Ms. Belinda A. Keever
Mr. Ronald J. Kemperle
Mr. Brendan C. Kinane
Mr. and Mrs. Hugh E. Kingery
Mr. Thomas S. Knight, Jr.
Ms. Victoria F. Korth
Dr. Donald E. Kroodmsa
Jeffrey and Elizabeth Kurtz
Donald and Deborah Lauper
Mr. and Mrs. Randolph S. Little
Liz Claiborne and Art Ortenberg Foundation
Philip and Caroline Loughlin
Dr. and Mrs. Herbert Louis
Mr. C. James Luther
Mr. and Mrs. David B. Magee
Ms. Carolyn Mangeng and Mr. Walter Spall
Mr. Evan Marks
Dr. Richard Marshak and Dr. Andrea Landsberg
Mr. Michael Matuson
Ms. Victoria May
Dr. Leigh McBride and Dr. Richard McCormack
Thomas and Linda McCarthy
Ms. Mary Ellen McCrossen
Ms. Winifred P. McDowell
Ms. Marjorie McGranahan
Mr. and Mrs. Peter C. Meinig
Ms. Madeline Miles
Stephen and Evalyn Milman
Mr. John V. Moore
William and Mary Sue Morrill
Mrs. Marcia S. Morton
Ms. Susan L. Mowry
Dr. Robert L. Murry, D.V.M.
Ellen and Rachel Naegeli
Dr. Diana Nevins
Owls Roost Fund



Donors

Ms. Juliet P. Tammenoms Bakker
Mr. and Mrs. Allan R. Tessler
The Inge Foundation
The White Pine Fund
Dr. Allen J. Togut
Mr. Bill Tollefson
Mrs. Sally S. Tongren
Mr. William G. Trankle
Ms. Marianne Turek Tornatore
Ms. Andrea Turkalo
Dr. Patricia Ann Turner
Mr. Lewis Ulrey
Mr. Joe Verreault
Mr. Andrew L. Wagner
Ms. Peggy Walbridge
Dr. Charles Walcott
Mr. John S. Warriner
Mr. Jude A. Weis
Mrs. Stefani Weiss
Ms. Georgia E. Welles
Dr. Brian White
Williams Family Foundation
Mr. Michael Williams and
Ms. Sally Russ
Mr. John Williamson
Ms. Jeannie B. Wright
David and Cherie Zelinger

\$500 to \$999

Ms. Margaret A. Abdou
Mr. Joseph Acosta
Mrs. Felicia Adams
Ms. Diane Adkin
Mr. and Mrs. Franklin E. Agnew
Ms. Oona Aldrich
Camille and Eleanor Allen
and Family
Russell and Barbara Allison
Douglas and Arie Anderson
Ms. Gayle A. Anderson
James and Darla Anderson
Ms. Linda M. Anderson
Dr. Mary Alice Anderson
Mrs. Ruth L. Anderson
Mr. J. Richard Andrews
Anonymous (2)
Dr. Ajit I. Antony, M.D.
Mrs. Jean R. Armour
Ms. Lori Ashley

Bill and Katherine Atterbury
Mrs. Diana Atwood Johnson
Mr. James H. Averill, Jr.
Ms. Susan P. Bachelder
Ms. Maria F. Bachich
Mr. Peter Backman and
Ms. Annie Christopher
Mr. and Mrs. Robert S. Baker
Dr. Jeffrey Baldani
Mr. and Mrs. Robert Bangert
Claire Barabash
Mr. William L. Barclay
Mr. Edward Barker
Mrs. Alice W. Barkhausen
Mr. Donald Barnes
Ms. Valerie Barnes
Dr. A. Sidney Barritt III
Ms. Catherine Barron
Mr. James Barry and
Mrs. Elizabeth Britton-Barry
Ms. Susan Barton
Ms. Becky Bartovics
Ms. Patricia G. Bates
Mr. and Mrs. Stephen Baumgartner
Mr. and Mrs. R.G. Beaton
Mrs. Katherine L. Beattie
Mrs. Juta Beauchamp
Mr. Bruce Becker
Susan and Frederick Beckhorn
Ms. Jill Beckman
Mr. and Mrs. James Bennett
Mrs. Barbra Berry
Ms. Anissa Berry-Frick
Ms. Alison R. Biggs
Reverend Tommy Bills
Ms. Joan M. Birchenall
Guthrie and Louise Birkhead
Mrs. Constance Blau
Mr. Jefferey Bleam
Mr. William Block
Blue Cross Pet Hospital
Mr. and Mrs. Bill Boardman
Mr. Richard L. Booth, Jr.
Mr. Alan Boss
Ms. Jean C. Bottcher
Ms. Olivia Boulter
Boveri Trackman Family
Foundation, Inc.
Mr. Robert R. Bowman

Dr. Edward Boyno
Brian and Kathryn Brackney
Mr. Jim Brady
Dr. Nachman Brautbar
Sandra and Jeff Bricker
Mrs. Walter F. Brissenden
Ms. Marney B. Brooks
Mr. Bart Brown
Ms. Becky A. Brown
Ms. Deirdre M. Brown
Ms. Elaine M. Brown
Ms. Percy Browning
Ms. Lauretta J. Bruno
Buck Henri, LTD
Scott and Mavis Buginas
Mr. Theodore J. Bullard, Jr.
Mr. Rhett W. Burgess
Ms. Colette A. Burrus
Ms. Kathryn E. Cade
Ms. Susan Whitney Callahan
Mr. and Mrs. Walter B. Chaskel
Clarice Mattson Environmental
Foundation
Jonathan and Priscilla Clark
Patricia and Al Clark
Ms. Kathi D. Clement
Dr. Clare Close
Mr. Addison Cole
Mr. James R. Collins
N. Karen and Gregory Collins
Ms. Carolee Colter
Mr. Richard Comstock
Mr. John Conover and
Ms. Janice Peterson

Dr. Geoffrey Conrad
Mrs. Elizabeth Coombe
Mr. Michael P. Corcoran
Professor William Crawford and
Professor Maria Crawford
Dr. Modestino G. Criscitiello, M.D.
Mr. Craig Cummings
Peter and Rhoda Curtiss
Mrs. Joan S. Cushman
Ms. Laurie Dann
Mr. Henry M. Darley
Carl and Penelope DauBach
Janis and Ron Davies
Mr. David Davis and
Ms. Jo Ann Mills
Mrs. Jackson Davis
Dr. Nancy J. Dawson
Ms. Ann Day
Mr. Edward N. Dayton
Ms. Electra de Peyster
Mrs. Lillian S. DeHart
Dr. Thomas J. Delaney
Robert and Linda Delap
Ms. M.M. Dieckmann
Ms. Rose Dill
Mr. Todd Dixon
Mr. and Mrs. Joseph K. Donohue
Mr. Gordon Douglas
Ms. Dorothy J. Doyle
Droll Yankees, Inc.
David and Susan Drown
Ms. Jennifer Dubois
Ms. Rebecca Dunaway
Weaver and Diana Dunnan
Mr. Steven Ealick and Judy Virgilio
Dr. William T. Ellison
Mrs. Alexandra L. Evans
Mr. Jeff Evans
Fermata, Inc.
Dr. David Ferster and
Dr. Indira Raman
Ms. Maxine M. Field
Mr. Virginia C. Fisher
Peter and Genevieve Flickinger
Brian and Judith Foley
Ms. Susan Ford-Hoffert
Ms. Alison Fox
Harold and Rhea Fox
Dr. Candace M. France

Mr. Jonathan Franzen
Ms. Nancy G. Frederick
Ms. Jeanne P. Freeman
Ms. Robyn Freeman
Sammy and Pam Freeman
Stephen and Barbara Friedman
Mr. Charles A. Fritz III
Mrs. Roberta Gagliano
Dr. and Mrs. Walter Gamble
Ms. Caroline R. Garbaty
Mr. Clayton Gascoigne
Ms. Valerie Gebert
Ms. Sandy Gewinner
Ms. Nancy Gilbert
Dr. Frank Gilliland
Mr. Michael A. Goldman
Mr. Edward Gomez and
Ms. Christina Van Fossan
Frederick and Fair Gouldin
Carl and Judith Graber
Mr. David Graham
Ms. Jane Graves
Ms. Judith A. Gray
Mr. Michael Gray and
Ms. Cecilia Riley
Mr. Paul Gray
Mr. and Mrs. J. B. Greenwood
Mr. Ken Greenwood
Ms. Dorothy Gregory
Ms. Julia A. Gregory
Ms. Amy E. Grose
Ms. Marlene Grover
Mr. Scott Gunnison
Mr. Kevin Hable
Dr. William Hackos
Mr. Will Haffner
Chris and Helen Haller
Mr. and Mrs. Gerard Hamill
Mrs. Carol Hanawalt
Mrs. Shirley A. Hance
Dr. Nora E. Hanke
Ms. Mary E. Hansen
Mr. Steven Harmer
Mrs. Sheila R. Harper
Mr. Thomas B. Harris
Mr. William C. Hartranft
Mr. Mark P. Hassell
Jane and Gerry Haviland
Mrs. Donna Hayes

Ms. Mona L. Hayford
Robert Heeren
Ms. Janeth C. Hendershot
Joe and Sue Henninger
Ms. Vicki R. Herrmann
Mr. Bill Hersey
Ms. Lucinda Anne Hess
Ms. Nancy S. Heymann
Mrs. Kate D. Hickey
Ms. Hannah Hill
Mr. Robert A. Hill
Mr. Daniel D. Hodges
Mr. and Mrs. Paul B. Hood
Ms. Theodora W. Hooton
Mr. William R. Hopping
Ms. Jean A. Horton
Henry and Sharon Hosley
Dr. George A. Housley, M.D.
Mr. J. Russell Hoverman
Mrs. Jeanne Howard
Miss Jean A. Howell
John and Elizabeth Howell
Dr. Ronald R. Hoy
Ms. Bette Hoyt
Ms. Rebecca C. Huddle
Ms. Judith Huf
Mr. James D. Hunt
Mr. William C. Hunter
Mr. Robert Hurtubise
Jack and Sally Iliff
Paul and Amy Impelluso
T. E. and Patsy Inglet
Mr. James C. Inman, Jr.
Mrs. Pamela A. Isdell
Dr. William Ishee, Jr.
Lee and Rebecca Jackrel
Ms. Carolyn B. Jackson
Ms. Shari Jackson
Ms. Ellen G. Jacobs
Kay and Peter Jamieson
Mr. Andrew MacAoidh Jergens
Mr. Peter M. Joftis
Dr. Donald E. Johnson
Ms. Heather Johnson
Mr. Alan R. Johnston
Mr. Anthony R. Jones
Mrs. Carol A. Jory
Mr. Robert Kappmeyer

Mr. and Mrs. Robert L. Kehr
Ms. Bettie F. Kehrt
Barbara J. Keinath
Mrs. Blanche Kelly
Ms. Mary D. Kelly
Dr. M. Keith Kennedy
Ms Patricia Kessler
Mrs. Susan L. Keys and Family
Dr. Lewis F. Kibler
Ms. Sarah J. Kilpatrick
Ms. Pamela Kindler
Kenneth and Elizabeth King
Dr. Robert E. Kleiger
Mr. Edward Klein and
Ms. Linda Trapkin
Ms. Nancy Kling
Mr. John Kopsky
Ms. Catherine Kotowski
Kevin and Jenifer Kramer
Dr. Stephen Kress
Rudolf and Dagmar Kroc
Ms. Jane Krusman
Ms. Connie Kummer
Ms. Barbara C. Kyse
Mr. Andre G. LaClair
Mrs. Elise S. Lapham
Ms. Heather D. Larson
Mr. Clayton Latimer
Mrs. Jeanne Leckert
Richard and Susan Lee
Ms. Roma E. Lenehan
Ms. Martha V. Leonard
Mrs. Lynn Leopold
Lisa-Marie and Michael Lerner
Ms. Elizabeth A. Levin
Nathaniel and Karen Levy
Dr. James D. Lillard, Jr.
Mrs. Grace V. Lincoln
Ms. Deborah L. Linde
Mr. Rick Lipsey
Dr. Hans-Christian Luedemann
Dr. Elizabeth Lynch
Ms. Josephine Nixon
Mrs. Barbara C. Noll
Neil and Sally Norcross
Ms. Pamela Norris
Dr. C. J. Norton
Mr. and Mrs. Donal C. O'Brien, Jr.
Mrs. Jean W. Ogle

Ms. Amy Marr
Ms. Candace Marshall
Ms. Michelle Maton
Mrs. April L. Matthews
Miss Helen A. Mattin
Frederick and Linda Mau
Ms. Mary Mauel
Ms. Ann M. Mayer
Ms. Missy Mayfield
Mr. Timothy McCaffrey
Mr. Donald R. McClintock
Marsha and James McCormick
Ms. Edith McCurdy
Ms. Holly McKenzie and
Mr. Robert Martin
Donald and Ione McKnight
Mrs. Mary M. McIlhany-Trout
Mr. John F. McMullan
Ms. Rhoda M. McNitt
Mrs. Sally McVeigh
David and Julianne Mehegan
Mr. Myron Mehلمان
Ms. Mary Anne Mekosh
Mr. John Mendyka, Jr.
Dr. June Mercer
Ms. Mollie L. Meyer
Mrs. Catherine Michaud
Mr. Earl E. Miller
Ms. M. Ellen Miller
Mr. and Mrs. R. G. Mitchell
Mr. Howard W. Mizell and Family
Mr. Michael Moran
Mr. Ernest D. Moritz
Mr. Joe Moser
Penny and Don Moser
Ms. Phoebe K. Mossey
Ms. Jerline Muller
Ms. Natalie H. Nakao
Ms. Judith C. Nelsen
Mr. and Mrs. Eugene W. Nester
Mrs. Beverly J. Neubauer
New York Audubon Society
Ms. Josephine Nixon
Mrs. Barbara C. Noll
Neil and Sally Norcross
Ms. Pamela Norris
Dr. C. J. Norton
Mr. and Mrs. Steven C. Rockefeller
Ms. Laura Roe

Dr. Patricia O'Handley
Ollie and Grace Oliver
Ms. Karen W. O'Neil
Mr. Henry H. Page, Jr.
Mr. C. W. Eliot Paine
Dr. Wendy R. Parish
Mr. Angus Parker
Dr. Frederick Parker
Mr. and Mrs. Terry J. Parrinello
Mr. Robert E. Parsons
Ms. Marilyn Pasierb
Ms. Anne L. Pattee
Ms. Carol Patton
Dr. Karen E. Perizzolo
Ms. Susan Permut
Robert and Veronica Petersen
Glenn and Ellen Peterson
Mr. Ralph Peterson
Dr. Barbara Phelan and Dr. Carol
Reed
Ms. Regina Phelps
Mr. and Mrs. Fred E. Phillips
Ms. Lauris J. Phillips
Mr. William Phillips and
Ms. Barbara Smith
Ms. Antoinette M. Pilzner
Mr. William W. Pinchbeck
Prairie Oak Veterinary Center
Marion Pratt
Mrs. Joan Promin
Mr. Albert E. Pyott
Ms. Terry Rabinor
Dr. and Mrs. Jan R. Radke
Ms. Karen Redfern
Ms. Susan Reed
Dr. Mitchell C. Reese
Mr. Paul Regan III
Mr. and Mrs. Edward Reilly-Wolford
Dr. and Mrs. Glenna S. Rice
Ms. Jane P. Rice
Ms. Lily B. Rice
Mr. Thomas F. Richardson
Dr. Beverly S. Ridgely
Mr. and Mrs. Benjamin Smith
Mrs. Catherine Smith
Ms. Elizabeth A. Smith
Mr. Scott Smith
Mrs. Judie G. Smithers
Ms. Nancy B. Soulette

Dr. William Ross
Ms. Mary L. Rowe
Ms. Michelle Rozales
Mr. David Ruppert
Ms. Karen L. Ruppert
Mr. William B. Russell
Ms. Suzanne Ryerson
Jeffrey and Susan Saffle
Dr. Donald C. Samson
Mr. Rick Sanders and
Ms. Janice Hand
Sean and Lisa Scanlon
Ms. Lynn Scarlett
Ms. Suzanne Schaefer and
Mr. Paul Dennison
Mr. George Scheets
Phyllis and Gary Schiller
Mr. Dick Schoenberger
Ms. Thelma C. Schoonmaker
Dr. and Mrs. Richard R. Schreiber
Mr. Frederick Schroeder
Terry Schroeder
Mr. Thomas S. Schulerberg
Mr. and Mrs. Robert W. Schulze
Ms. Barbara Searles
Mr. Christopher J. Selley
Dr. Greg Seymour
Ms. Kathleen S. Seymour
Mrs. Alice L. Shaner-Simpson
Ms. Janice Sharp and
Mr. Brian Bowman
Mr. John T. Shaw
William and Jacquelyn Sheehan
Ms. Cynthia Shereda
Mrs. Joan Siedenburg
Ms. Deborah A. Siegele
Ms. Barbara J. Siepierski
Donald and Linda Simmons
Dr. and Mrs. Joseph Rogers
Simpson
Mr. and Mrs. John W. Sink
Mrs. Marjorie Smart and
Mr. Robert Camp
Mr. and Mrs. Benjamin Smith
Mrs. Catherine Smith
Ms. Elizabeth A. Smith
Mr. Scott Smith
Mrs. Judie G. Smithers
Ms. Nancy B. Soulette

Dr. William Ross
Ms. Mary L. Rowe
Ms. Michelle Rozales
Mr. David Ruppert
Ms. Karen L. Ruppert
Mr. William B. Russell
Ms. Suzanne Ryerson
Jeffrey and Susan Saffle
Dr. Donald C. Samson
Mr. Rick Sanders and
Ms. Janice Hand
Sean and Lisa Scanlon
Ms. Lynn Scarlett
Ms. Suzanne Schaefer and
Mr. Paul Dennison
Mr. George Scheets
Phyllis and Gary Schiller
Mr. Dick Schoenberger
Ms. Thelma C. Schoonmaker
Dr. and Mrs. Richard R. Schreiber
Mr. Frederick Schroeder
Terry Schroeder
Mr. Thomas S. Schulerberg
Mr. and Mrs. Robert W. Schulze
Ms. Barbara Searles
Mr. Christopher J. Selley
Dr. Greg Seymour
Ms. Kathleen S. Seymour
Mrs. Alice L. Shaner-Simpson
Ms. Janice Sharp and
Mr. Brian Bowman
Mr. John T. Shaw
William and Jacquelyn Sheehan
Ms. Cynthia Shereda
Mrs. Joan Siedenburg
Ms. Deborah A. Siegele
Ms. Barbara J. Siepierski
Donald and Linda Simmons
Dr. and Mrs. Joseph Rogers
Simpson
Mr. and Mrs. John W. Sink
Mrs. Marjorie Smart and
Mr. Robert Camp
Mr. and Mrs. Benjamin Smith
Mrs. Catherine Smith
Ms. Elizabeth A. Smith
Mr. Scott Smith
Mrs. Judie G. Smithers
Ms. Nancy B. Soulette

Mr. and Mrs. James W. Spencer
Richard and Margaret Sprott
Vivek Sriram
Mr. Bruce Stebbings
Dr. Jeanne M. Stelman
Ms. Jennifer Stephan
Ms. Amy Stirrup
Mr. Jim Strachan
Mr. and Mrs. Thomas Sutherland
Dr. Michael G. Tannenbaum
Ms. Donna E. Tatro
Mrs. Barbara Taylor
Mr. Jerome Taylor
Ms. Marie Terlizzi and
Mr. Robert Dobbs
Manley and Doriseve Thaler
Mr. and Mrs. Joe Thomas
Mrs. Kathryn Thorpe
Ms. Nancy Tibor
Mr. Jim Tilling
Mr. Bill Tollefson
Dr. and Mrs. J. Charles Tracy
Charles and Nancy Trautmann
Mack and Carol Travis
Ms. Rebecca Tulloch
Ms. Alice H. Turk
James and Mary Van Buren
Mrs. Mary Van Vleck
Mr. Wouter K. Vanderwal
Ms. Anneke Vankirk
Ms. Rhonda Vitanye
Mrs. Emily V. Wade
Dr. Marcia J. Wade
Dr. Judith L. Wagner
Ms. Laurel C. Walker
Mrs. Dorris M. Wampler
Mr. Fred F. Wampler
Milo and Barbara Warner
Dr. Nancy E. Warner, M.D.
Mr. and Mrs. Stephen L. Weber
Mrs. Robert Weinstock
Mr. and Mrs. D.B. Wetherell, Jr.
Mr. Thomas Wheaton
Mr. David White
Kenan and B. Briscoe White
Dr. Stephen M. White
Mr. Wayne Whitmore
Wild Birds Unlimited, Buffalo, NY
Wild Birds Unlimited, Ithaca, NY

Wild Birds Unlimited,
Saratoga Springs, NY
Mr. William Wilkinson and
Ms. Janet Dale
Ms. Josephine Wilkinson-Gould
Mrs. Carolyn Will
Dr. Hibbard E. Williams
Ms. Sally Williams
Mr. Stefan T. Williams
Dr. Kay M. Williamson
Mr. and Mrs. William E. Willis
Ms. Linda Wittlin
Ms. Marina Wolkonsky
Wrenwood, Inc./Wild Birds
Unlimited
Ms. Mary P. Wright
Mr. J. A. Wunderlich III
Ms. M. Catherine Yerzley
Mr. Dan Young
Ms. Linda Young
Owen and Linda Youngman
Mr. Ken Zaremba
Ms. Rebecca Zatsman
Mr. Michael F. Zeloski
Mrs. Anne-Marie Ziegler
Mr. Jerome M. Ziegler
Mr. Richard Zimmerman

Matching Gifts

Abbott Laboratories
Ace Ina Foundation
Adobe Systems
Aegon Transamerica Foundation
Aetna, Inc.
Air Products & Chemicals, Inc.
Akzo America Foundation
AllianceBernstein
American Transmission Company
Argonaut Group, Inc.
AT&T Foundation
Avago Technologies
Bank of America Foundation
Bank One Foundation
Boeing Company
BP Foundation, Inc.
Bristol-Myers Squibb Company
Casey Matching Gifts Program
Caterpillar Foundation
Matching Gift

ChevronTexaco Corporation
Coca-Cola Foundation
Con Edison Company
ConocoPhillips
Cooper Industries, Inc.
Corning Incorporated
Deutsche Bank America, Fdn.
Discover Financial Services
Eaton Corporation
Edison International
Eisai, Inc. Matching Gift Co.
Eli Lilly & Company Foundation
Energizer Corp. Matching
Gift Company
ExxonMobil Foundation
Freddie Mac Foundation
Gap Foundation
Genentech, Inc.
Mr. Dan Young
General Electric Company
General Mills Foundation
GlaxoSmithKline
Global Impact
Goldman Sachs & Company
Harris Foundation Corporation
Heinz Company Foundation
Hewlett Packard Company
Home Depot
Houghton Mifflin Harcourt
IBM Corporation
Illinois Tool Works Foundation
Intel Corporation
John D. and Catherine T.
MacArthur Foundation
John Wiley & Sons, Inc.
Johnson & Johnson
JP Morgan Chase Foundation
Keybank Foundation
Kimberly-Clark Foundation
Kraft Foods North America, Inc.
LabCorp
Land O'Lakes, Inc.
Law School Admission Council
Lockheed Martin
Marathon Oil Company
McCormick Foundation
Merck Company Foundation
Metropolitan Life Foundation
Microsoft Corporation
Monsanto Company



Munich Reinsurance America, Inc.
New York Community Trust
Nintendo of America, Inc.
Northern Trust Company
Oracle Corporation
Orvis-Perkins Foundation
The PepsiCo Foundation, Inc.
Pfizer, Inc.
Pioneer Hi-Bred International
Pitney Bowes
PPG Industries Foundation
Principal Financial Group Fdn.
Procter & Gamble Company
Prudential Insurance Foundation
Regions Financial Corporation
Ridgewood Savings Bank
Rockwell Collins
Rum Village Nature Ct.
SC Johnson & Son, Inc.
Security Mutual Life Insurance
Shell Oil Company Foundation
Texas Instruments
Thrivent Financial Lutherans
UBS Matching Gift Program
Union Pacific Corporation
United Technologies Corporation
UnumProvident Corporation
Vanguard Group, Inc.
Verisk Analytics
Verizon Foundation
Vermont Community Foundation
Walt Disney Company Foundation
Wells Fargo Bank
Wells Fargo Foundation
Westly Foundation
Williams Companies
Wisconsin Energy Corporation
Xerox Corporation
XL America Matching Gift

Sapsucker Woods Society Recognizing all friends who have included the Lab in their estate plans, past and present

Mr. Sal Acosta and
Ms. Suzanne Hutchinson
Mr. Charles S. Adams
Ms. Louise Addis

Ms. Diane Adkin
Ann and Philip Aines
Albrecht Estate
Mr. John E. Alexander
Russell and Barbara Allison
Mr. Elwin F. Anderson
Ms. Bertha Andrew
Mrs. Patricia L. Angotti
Bill and Katherine Atterbury
Terry Auld
Ms. Katharine M. Aycrigg
Ms. Madge Baker
Mr. & Mrs. Konrad Bald
Mrs. John F. Barry
Mrs. John W. Behnken
Mrs. Dorothy W. Bell
Mr. Joseph Benner
Mr. Mark J. Bilak & Family
Mrs. Janet Blam
Ms. Susan D. Boettger
Mrs. James C. H. Bonbright
Ms. Ann Bregman
Dr. Joan Brenchley-Jackson
Ms. Becky A. Brown
Ms. Irene Brown
Ms. Betty A. Bruhns
Mr. Gregory Brumfield
Jane and Gerry Haviland
Sheila Harrah Hearne Estate
Harry Heidt Estate
Ms. Phyllis Henney Estate
Dr. Linda J. Himot
Mrs. Leona S. Hine
Ms. Mary P. Hines
Henry and Sharon Hosley
Mr. John Huppler
James and Roberta Hutchison
Mr. Bernard Iliff
Mr. Isidor Jeklin
Mrs. Kristine Johnson
Ms. Nora Jones
Mrs. Judith M. Joy
Mrs. Judith M. Kay
Mrs. Virginia R. Crocker
Ms. Ruth Cummings
Peter and Rhoda Curtiss
Randi and L. Van Dauler
Ms. Martha E. Day
Mr. Vernon D. Dayhoff

Ms. Nancy A. deGross
Mrs. Ruth D. Dillon
Stephen and Betty Eaton
Estate of Michael Barton Eddy
Mr. Michael B. Eddy Estate
Ms. Norma Edsall
Dr. Leonard Eiseler
Ms. Frances J. Ehlers
Mrs. George B. Emery
Mr. and Mrs. Roger H. Farrell
Ms. June M. Ficker
Mr. Robert T. Foote '39
Dr. Kathy Freas
Mr. William F. Fuerst, Jr.
Mr. and Mrs. H. Laurance Fuller
Mrs. Esther B. Gamsey
Mr. Donald P. Garrett
Ms. Paula Gills
Vincent and Ann Marie Glaviano
Mrs. Emily R. Glover
Mrs. Doris Goldstein
Mr. Alfred H. Gray
Mr. William Anson Grover, Sr.
Ms. Joan M. Guerin
Mrs. Suzanne O. Happeny
Mrs. Karen E. Harris
Duncan and Adrienne Hartley
Jane and Gerry Haviland
Sheila Harrah Hearne Estate
Harry Heidt Estate
Ms. Phyllis Henney Estate
Dr. Linda J. Himot
Mrs. Leona S. Hine
Ms. Mary P. Hines
Henry and Sharon Hosley
Mr. John Huppler
James and Roberta Hutchison
Mr. Bernard Iliff
Mr. Isidor Jeklin
Mrs. Kristine Johnson
Ms. Nora Jones
Mrs. Judith M. Joy
Mrs. Judith M. Kay
Mrs. Virginia R. Crocker
Ms. Ruth Cummings
Peter and Rhoda Curtiss
Randi and L. Van Dauler
Ms. Martha E. Day
Mr. Vernon D. Dayhoff

Mr. Norman C. Lantz
Mr. Robert J. Laskowski
Howard and Sydney Leach
Marian Legg
Mrs. Marjorie Lewin
Mr. Richard Livesey III and
Mrs. Mae Livesey
Ms. Catherine Lomuscio
Mrs. Madeline Lutz
Mr. and Mrs. William Macaulay
Mr. J. De Navarre Macomb, Jr.
Ms. Marion Mascari
Ms. Mary Mauel
Mr. Richard G. McClung
Ms. Betty L. McCurdy
Mr. Everett G. McDonough, Jr.
Ms. Margaret E. McDowell
Ms. Winifred P. McDowell
Dr. Ann J. McGarvey, D.D.S.
Mrs. Elizabeth A. McLaren
Ms. Carol McQuade
Mr. Earl O. Menefee
Mr. Harry Merker
Mr. John P. Merrill
Ms. Rosalie Metzger
Ms. Marinia Michalec
Dr. Norman S. Moore
Ms. John A-X Morris '74
Mr. John David Morris
Ms. Rita J. Myrick
Mrs. Ellen Dana Nagler
Ms. Mildred E. Neff
Gary Neuman and Julie West
Dr. Polly G. Nicely
Mr. Alphonse R. Normandia
Mrs. Judith L. O'Neale
Mr. Stephen B. Oresman
Mr. Thomas R. Palmer
Ms. Virginia Panarace Estate
Mrs. Ellen S. Parkes
Ms. Ellen I. Paul
Ms. Esther A. Pearlman
Dr. & Mrs. William D. Peterson
Mr. George M. Pflaumer
Professor Elmer S. Phillips
Mr. William Phillips and
Ms. Barbara Smith
Ms. Lauren Pickard
Mr. Richard F. Pietsch

Mr. Zoltan Porga
Mr. and Mrs. Ronald R. Porter
Mr. Richard Pough
Albert and Diane Puff
Ms. Hazel E. Reed
Ms. April L. Reese
Dr. Laurie Renz
Ms. Frances M. Rew
Ms. Kathleen Rhodes
Mrs. Susan Starr Richards
Mrs. Eleanor Robbins
Mr. William R. Robertson
Mr. Stan Rodwin
Mr. Thomas W. Rogers Estate
Mr. and Mrs. Edward W. Rose III
Mrs. Jeanette G. Rosenberger
Mrs. Elizabeth E. Rowley &
Mr. Jean Rowley
Ms. Gayle Russell
Dr. William L. Rutherford
Mr. Richard Scales
Ms. Lynne R. Scheer
Dr. Francis G. Scheider, M.D.
Mrs. Janey Schnoor
Ms. Ellen M. Schopp
Mr. and Mrs. Robert F. Schumann
Ms. Monica J. Schwalbach
Mr. and Mrs. Sheldon Severinghaus
Betty and Jim Shannon
Ms. Helen R. Shaskan
Mrs. Mary S. Shaub
Mrs. Alice M. Shaw
Mr. Richard S. Shirley
Mr. Richard J. Siewers
Ms. Mindy Simon
Mrs. Carol U. Sisler
Bernie and Mary Slofer
Ms. Victoria Slowik
Mrs. Marjorie Smart and
Mr. Robert Camp
Mrs. Emily C. Smith
Ms. Marybeth Sollins
Dr. and Mrs. Kenneth T. Steadman
Barry and Sandy Stevenson
Mr. William R. Stewart
Ms. Pamela J. Story
Mr. Edward P. Street, Jr.
Mrs. Lyman K. Stuart
Ms. and Mrs. Miriam P. Stuart

Ms. Ingrid Sunzenauer
Mr. Scott Sutcliffe
Ms. Donna E. Tatro
Mrs. Nancy Thomas
Mr. John H. Thomson
Dr. and Mrs. Walter A. Thurber
Mrs. Phyllis Tillinghast
Elizabeth Todd
Mr. Charles E. Treman, Jr.
Reverend Barbara B. Triggs
Ms. Charlotte Vaughn
Mrs. Mary Clare Ward
Mrs. E. R. Webster
Mrs. Madelon G. Wehner
Ms. Julie Westbrook
Ms. Jeanne A. White
Mrs. Jeanne D. Wigen-Ayers
Ms. Hazel L. Wilbur
Mr. Robert G. Williams
Mrs. Louise W. Woodruff
Mrs. Shirley S. Woods
Mrs. Barbara Wright
Ms. Jeannie B. Wright
Mr. L. Christopher Wright
Dr. Paula Yellin
Mr. George W. Zepko
Ms. Dorothy N. Zirkle

Gifts in Memory of

Robert H. Anderson
Dr. Donna Esposito and
Dr. William Ross
General Electric Company

Frances Adele Tyler Andrew
Ms. Carolyn van Leer

Ann Beale
Ms. Sue Farmer

Ms. Barbara J. Beharriell
Ms. Shirley K. Beharriell

Mr. Fred Bennes
Ms. Ann Hudson

Kenneth Buttler
Ms. Sheila Stone

Mrs. Eleanor Carr
Ms. Shelley Craine
Ms. Carol L. Faye Blanding

Ms. Nancy Griffin
Ms. Helen A. Hill
International Brotherhood of
Electrical Workers
Ms. Deborah Knapp
Mrs. Carol Merilahti
Lury Wallenbeck

**Maurice Edmond Antoine
Marie Joseph comte de
Courten**
Ms. Charlotte Mukal

Deborah Cook
Ms. Alison Flain

Mr. James A. Dick
Mr. Donald L. Dick

Ms. Catherine G. Elliott
Ms. Valerie Smith

Mr. H. Burton Entrekin
Mr. Douglas F. Beech
Mrs. Claire R. Damaske
Ms. Janice Mann-Beech
Ms. Onalie A. Petit
Ms. Helen Pettit

Mr. A. Joseph Fairbank
Ms. Priscilla Fairbank

Nellie Filhour
Ms. Pamela J. Wilson

Mr. Harry Goldman
Ms. Connie Scofield

Mr. Harvey Guthrie
Ms. Abby Collier

Dr. William Hetznecker
Claire Conway
Defender Association of
Philadelphia
Ms. Doris Edwards
Mr. George Fleck
Marc and Phyllis Forman
Ms. Lillian Giuliana
Michael and Brenda Goldblatt
Ms. Julia Gould
Ms. Linda J. Hansell
Ms. Heather Hebert
Mrs. Adele Kaehler
William and Joan Kane
Mrs. Susan Kolverid
James and Nina Korsh

Ms. Mary B. McCall
Mr. Benjamin S. Ohrenstein
Ms. Sandra P. Schier
Dr. Steven Schlesinger, D.M.D.
Ms. Elaine Selan
Ms. Barbara G. Shafer
Ms. Irene Shoffner
Terranear PMC, LLC
Ms. Jean Zelten

James A. Hontz
Ms. Jean Buckhout

Mr. Robert T. Horn
Dr. and Mrs. Robert Horn, Jr.
Thomas and Karen Horn
Jeffrey and Elizabeth Kurtz

Mr. and Mrs. Johnson
Mr. R. Tenney Johnson

Mr. Robert H. Johnson
Ms. Suzanne C. Barunas

Mrs. David Kemp
Ms. Lois Kroll

Robert Koch
Mrs. Jeanne Koch

Mrs. Mary G. Lacey
Ms. Mary J. Anderson
Mrs. Barbara Coleman
Ms. Frances A. Mason
Ms. Catherine K. Paddock
Phoenix Graphics, Inc.
Mr. Maurice Stoughton
Mr. John E. VanDemark

Dr. Peter Mayo
Dr. Diana Patch

Marilyn Merdinger
Mr. William Merdinger

Ed Mixa
Mrs. Ed Mixa
Ms. Beth Baxter

Ms. Sarah A. Porter and Family
Ms. Elizabeth Cain
Ms. Elisa Gillardon
Regional Women's H. Group LLC
Ms. Rose Miano
New Bedford Environmental
Department
Mr. George Pettit, Jr.

Ms. Jane M. Friedman
Ms. Patricia A. Gannon
Ms. Francine Lahey
Mr. Frank A. Miano

Robert J. Raynor
Mrs. Nicole Thompson

Colonel Wallace Redman
Mr. Michael Redman

David M. Riffle
Clyde and Dolores Riffle

Ms. Priscilla G. Specht
M. E. Richards

David Stemple
Ms. Jane Yolen

Sally Sutcliffe
Scott Sutcliffe

Mrs. Rose Tichy
Mrs. Gladys M. Vejsicky
Clyde and Dolores Riffle

Mrs. Tracey Wallace
Ms. Carol Ann Wadley

Page C. Webb
Ms. Cynthia M. Smithbower

Barry White
Mrs. Cyrille White

Raymond C. Wieboldt
Mrs. Margaret S. Wieboldt

Mr. Paul Zuk
Anonymous (2)
J. Duane and Mary Johnson
Ms. Mary F. Lovelace
Mrs. Catherine Slusarek
Mrs. Ruth Spincic
Ms. Sally Zelasko

Gifts in Honor of

Ms. Sherrie Andree
Mr. and Mrs. Bradley Grainger
Patricia H. Kiely
Mrs. Viola P. Monaghan

Mr. Bob Blakely
Mr. Eliot Tucker

Ms. Kim Conrad
The Mauer Family

Ms. Maxine Dougan
Candi and Judd Hubert

**Mr. John Foote and
Ms. Kristen Rupert**
Lisa and Lon Hoyt
The Midvale Foundation

**Frank H. T. Rhodes Exemplary
Alumni Service Award**
Mr. Martin Heckscher
Mr. Ernest D. Moritz

R. K. and Gaur
Ms. Patricia Castelli

**Dr. and Mrs. Robert
S. O. Harding**
Ms. Jane Pepper

Mr. & Mrs. Paul B. Hood
Henry and Eleanor Hood

Ms. Sara Kaiser
Ms. Michelle Kaiser

Mr. Mark Newstrom
Ms. April Silber

Dr. Drew M. Noden
Ms. Gail Noden

Mr. Fredrick C. Powell
Mrs. Shirley Parish

Ms. Beverly Quinlan
Mary and Joseph Hughes

Mr. Ari Rice
Miss Helen A. Mattin

Ms. Laurie Rubin
Mr. and Mrs. Bradley Grainger
Patricia H. Kiely
Mrs. Viola P. Monaghan

Mr. Steve Ryan
Mr. and Mrs. Bradley Grainger
Patricia H. Kiely
Mrs. Viola P. Monaghan

Mariel & Ava Silpe
Ms. Jay Silpe

Don Simonson
Mr. John Lipsky

Mrs. Dorris M. Wampler
Mr. Fred F. Wampler

Mr. Sefton Wiggs
Dr. Marie Farr
Mr. Kenneth Wilson and
Ms. Christa Reiser

Endowments

General Support
Adelson Family Fund for
Citizen Science
Albert R. Brand Endowment
Arthur A. Allen Memorial Fund
Bayard W. Read Memorial Fund
Carpenter Family Book and
Periodical Endowment
Charles E. Treman Jr. Fund
David W. Stemple Fund
Edwin H. Morgens Directors
Discretionary Fund
Eleanor Rice Pettingill Fund
Lab of Ornithology Life
Membership Fund
Lab of Ornithology Operations and
Maintenance Endowment
Lab of Ornithology Operations Fund
Leona S. Hine Library Endowment
Robert Wilson Trail Maintenance
Fund
Sapsucker Woods Sanctuary Fund
Stella Nemo Bird Feeding Program
Ted Parker Conservation Fund
Ted Parker Memorial Fund
Thomas Tyson and
Elizabeth Roe Fund
William Fuerst Memorial Fund
Graduate Student Support
Anna Maria Brown Fellowship
Charles Walcott Graduate
Fellowship
David and Sandra Junkin Graduate
Fellowship for Bird Studies
Eleanore Stuart Graduate
Fellowship
H. Laurance and Nancy L. Fuller
Fellows Program
Halberstadt Graduate Fellowship
Lab of Ornithology Graduate
Student Fund
Margaret H. and Charles E. Treman
Graduate Fellowship

Professorial Support

Arthur A. Allen Director
of Citizen Science
Edwin H. Morgens Professor
of Ornithology
Imogene Powers Johnson
Senior Scientist
Louis Agassiz Fuertes Director
and Professor
Robert F. Schumann Faculty
Fellowship
Robert G. Engel Professor
of Ornithology

**Teaching, Research, and
Undergraduate Support**
Brenchley Family Fund
Carol U. Sisler Charitable
Remainder Unitrust
Cornell Wild Bird Research Fund
Diane L. Adkin Endowment Fund
Dr. David O. Carpenter Education
Endowment
Duemling Endowment for
Undergraduate Research
Eiseler American Robin Fund
Gero Student Endowment
H. Laurance and Nancy L. Fuller
Evolutionary Biology Program
J. Charles Tracy Sr. Endowment
for Undergraduate Research
Kristen Rupert and John Foote
Undergraduate Research Fund
Louis Agassiz Fuertes Lectureship
Louise Addis Charitable
Remainder Trust
Nancy Horton Bartels '48 Scholars
Robert L. and Margaret W. Craig
Education Fund
Sally Merrill Sutcliffe Endowment
for Cornell Students
Vern Dayhoff Graduate
Research Fund
Walter E. Benning Fund

Corporate Partners

\$20,000 and above
Kaytee Products, Inc.
Swarovski Optik North America
Wild Birds Unlimited, Inc.
\$5,000 to \$10,000
Droll Yankees, Inc.
\$1,000 to \$4,999
America's Pet Store
Aspects
Birdola Products
CHS, Inc.
Lebanon Seaboard Corporation
(Lyric Wild Bird Food)
Natural Waterfalls with Robert
Stapleton
Pine Tree Farms, Inc.
The Humm

The Cornell Lab of Ornithology takes great pride in the stewardship of your gifts.

Revenues have grown steadily during the past five years, allowing us to build sustainable programs and broaden global impacts for birds and biodiversity. Together with a growing and generous donor base, the dedicated staff at the Lab continues to succeed in securing grants and contracts and generating healthy program revenues. At the same time, we have constrained expenditure growth with a particular focus on keeping administrative and fundraising expenses as low as possible and investing in the future.

Thank you for your trust and for your continued support in making our far-reaching work possible.

Financial Report (July 1, 2010 – June 30, 2011)

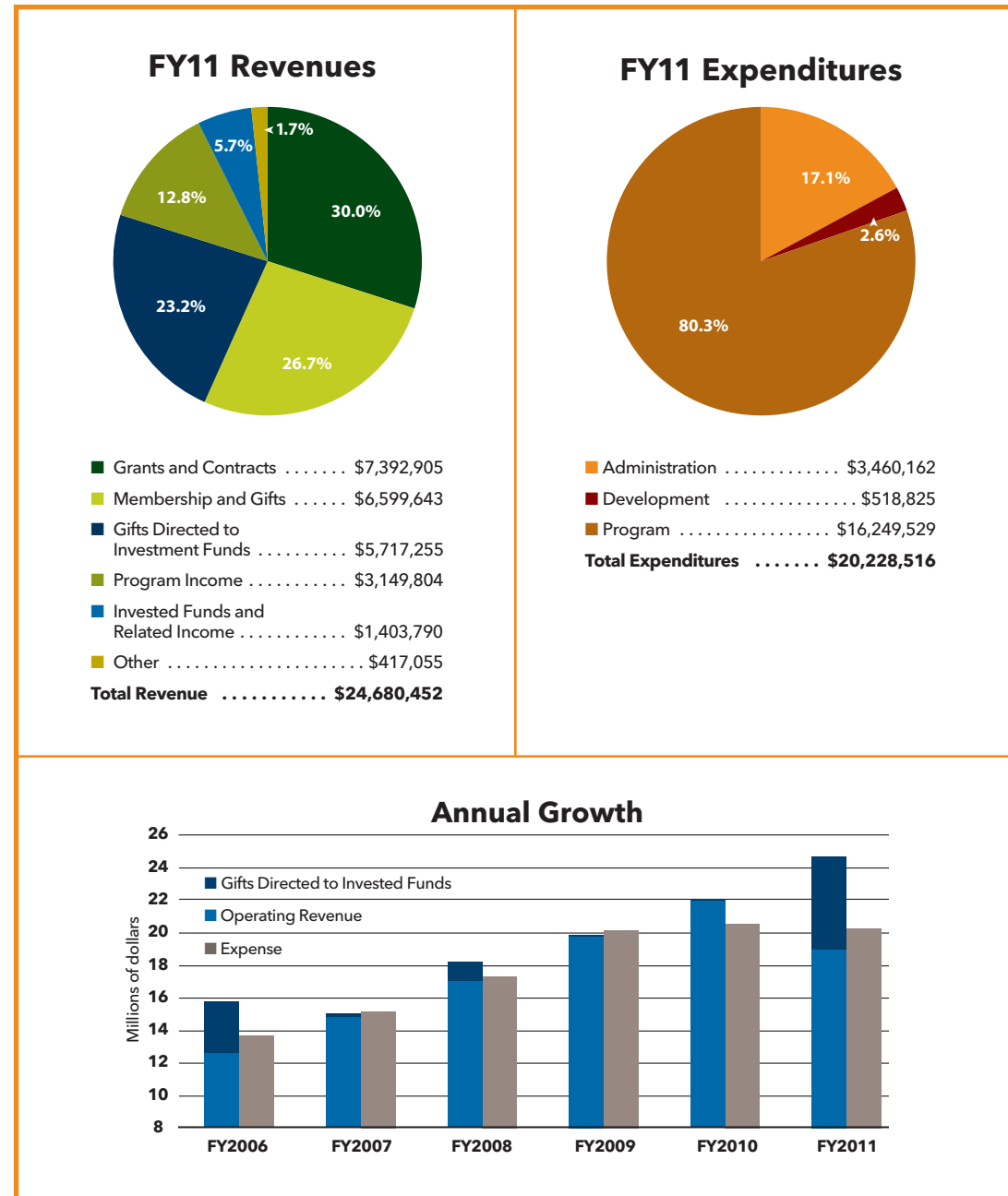
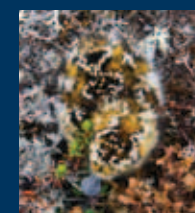


Photo Credits

Front cover: Spoon-billed Sandpiper and chick by Gerrit Vyn.
 Pages 2-3: Spoon-billed Sandpiper and nest with eggs by Gerrit Vyn.
 Page 4: Baltimore Oriole by Gerrit Vyn. Page 5: Great Backyard Bird Count participant in Rhode Island by Sue Dunn. Students in Puerto Rico courtesy of Leaders of the World. White-breasted Nuthatch by Gary Tyson. Monarch butterfly by Diane L. Tessaglia-Hymes.
 Page 6: Magnificent Riflebird in New Guinea by Tim Laman. Acorn Woodpeckers by Marie Read. Song Sparrow by Cameron Rognan. Tree Swallow by Eduardo Iñigo-Elias. Taza Schaming by Jada Schaming. Clark's Nutcracker by Jacob S. Spindel. Page 7: New Guinea expedition by Tim Laman. Black-throated Gray Warbler by Roy Brown; Blackburnian Warbler, American Redstart, and Prothonotary Warbler by Laura Erickson; Painted Redstart by Ed Schneider. Wood Thrush by Roger Eriksson.
 Page 8: Nathan Senner and Andy Johnson with Hudsonian Godwit, Canada, by Eric Liner. Helmeted Woodpecker by Martjan Lammertink. Black-capped Petrel by Brian Sullivan. Black-crowned and Gray-crowned Palm-Tanagers by Eladio Fernandez. Yula Kapetanakos by Kathleen Griffen. White-rumped Vulture by Jyotendra Thakuri. Underwater humpback whales by David O. Brown. Page 9: Peru's Gran Pajonal region by Glenn Seeholzer and Ben Winger. Golden-winged Warbler by Gerrit Vyn. Karl Berg by Chris Pallis. Forest elephant by Andrea Turkalo. Colleagues in Gabon courtesy of Peter Wrege.
 Page 10: Yellow-billed Magpie by Donald Metzner. Project PigeonWatch participants courtesy of Celebrate Urban Birds. Young Birders by Christopher L. Wood. Students in Costa Rica (2) courtesy of Lilly Briggs. Page 11: Students in Puerto Rico courtesy of Leaders of the World. Sapsucker Woods Migration Celebration by Alex Chang. Workshop in Colombia by Viviana Ruiz-Gutiérrez. Athena Fund owl by Ann-Kathrin Wirth. Ben Freeman by Alexandra Class.
 Page 12: Northern Flickers by Keith Willis. Mallard by Rebecca Richardson. Keel-billed Toucan by Peter Watthy. Ann-Kathrin "Fritzi" Wirth by Diane L. Tessaglia-Hymes. Golden-winged Warbler illustration by Ann-Kathrin Wirth. Page 13: Taza Schaming by Pocholo Martinez. Clark's Nutcracker by Wolfgang Wander. Great Backyard Bird Count kids by Erin Peppel. White-breasted Nuthatch by FeederWatcher Jennifer Taggart. Students in garden by Meghan P. Cervený.
 Page 14: Yellow-bellied Sapsucker by Marie Read. Student in Morgens Observatory by Jason Koski. Greg Budney by Jon Crispin. Page 15: Photos of sound recording equipment ca. 1935 from Cornell Lab of Ornithology archives. Johnson Center for Birds and Biodiversity by Kevin Stearns. Tree Swallow by Wayne Bierbaum.
 Back cover: A Spoon-billed Sandpiper chick by Gerrit Vyn.



On the back cover a Spoon-billed Sandpiper chick sits camouflaged among lichens on the Russian tundra.

Adult Spoon-billed Sandpipers maintain constant vigilance, watching for predators such as gulls, jaegers, and ravens. When they utter a warning call in response to aerial predators, the chicks become motionless, blending into the landscape to avoid detection. "It was difficult to watch the young depart the nest for the last time," said photographer Gerrit Vyn. "Their tiny bodies look so vulnerable in the seemingly unforgiving landscape—it's a wonder that any of them survive."

The future of Spoon-billed Sandpipers is precarious, with fewer than 200 estimated to remain. The Cornell Lab of Ornithology will use scientific expertise and vibrant footage of this species to provide people, conservation organizations, and government agencies with the inspiration and information needed for critical conservation action.

